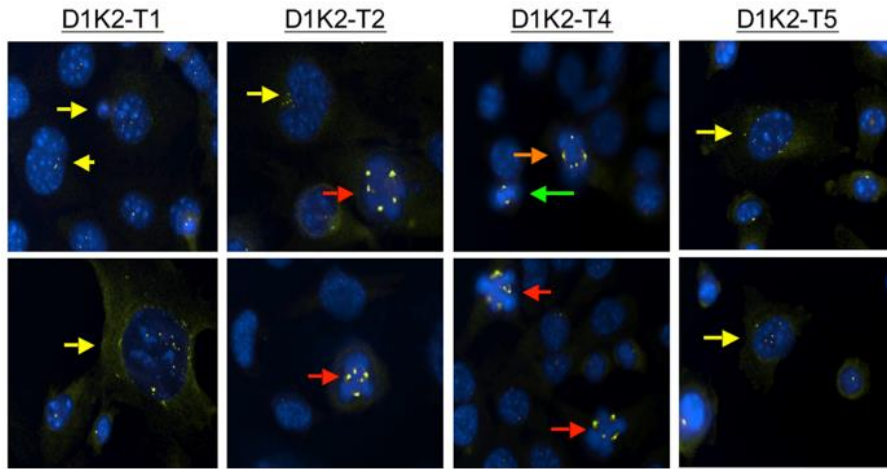
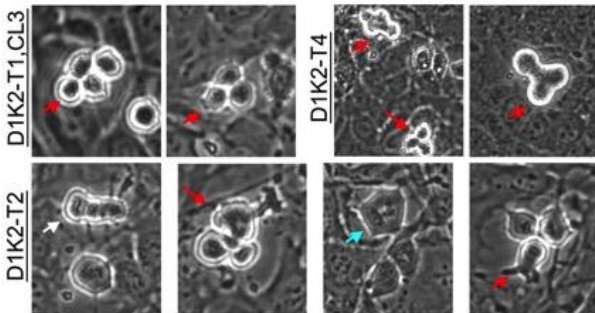


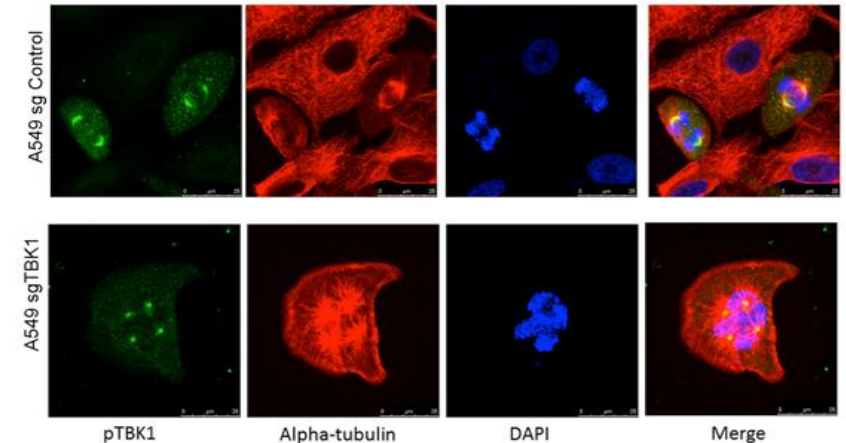
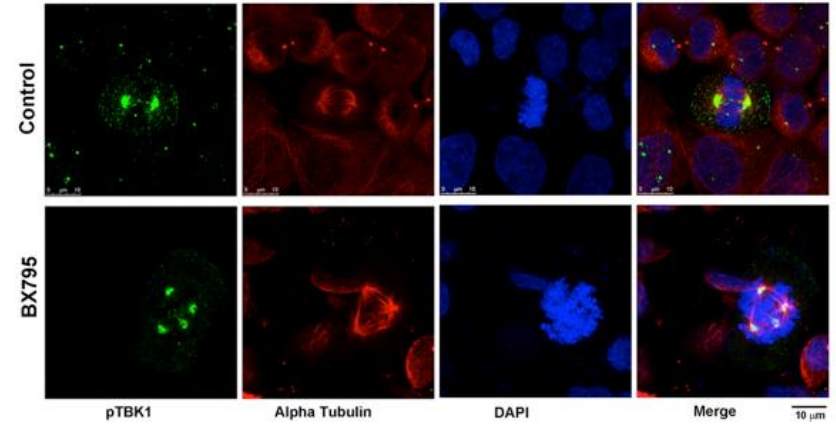
A. Constitutive Cdk2 activation causes centrosome amplification (upper panel) and aberrant mitoses (lower panel)



γ -Tubulin/DAPI



B. TBK1 inhibition (upper panel) or depletion (lower panel) leads to cells with multiple centrosomes



C. A relationship exists between TBK1 signaling and Cdk2 activity:
Haura and Colleagues, *PNAS*, 110, 12415